

Plan Of Proposed Subdivision

showing subdivision of part of

S.W. 1/4 Sec. 2 - 43A - 3 - 3

ROSTHERN, SASK.

Scale : 1 : 1000

Preliminary plan completed May 15th, A.D. 2006
 Preliminary plan revised May 26th, A.D. 2006 to show Environmental Reserve - ER1.

By : W. J. [Signature]
SASKATCHEWAN LAND SURVEYOR

Examined and Approved :

Owner _____

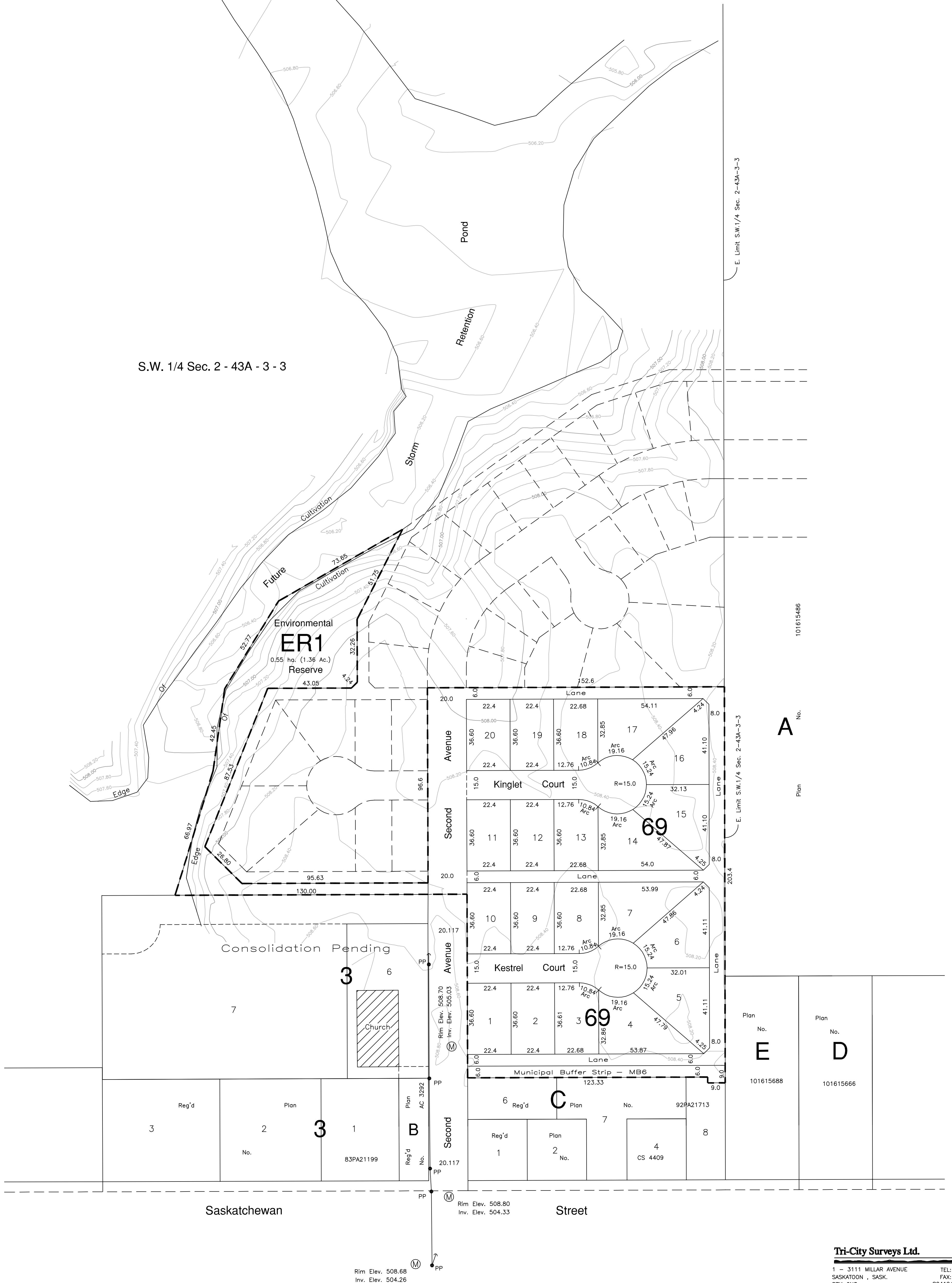
Date _____

Note :

- Portion to be surveyed is outlined by a heavy broken line and contains 3.42 Hectares more or less.
- Measurements are in metres and decimals thereof.
- PP - - - - denotes Power Pole.
- (M) - - - - denotes Manhole.
- Contour interval is 0.20m
- Contours are relative to Control Monument No. 785074, with an elevation of 507.998



S.W. 1/4 Sec. 2 - 43A - 3 - 3



E. Limit S.W. 1/4 Sec. 2-43A-3-3

E. Limit S.W. 1/4 Sec. 2-43A-3-3

E. Limit S.W. 1/4 Sec. 2-43A-3-3

E. Limit S.W. 1/4 Sec. 2-43A-3-3

E. Limit S.W. 1/4 Sec. 2-43A-3-3

A

E

D

101615486

Plan No.

101615688

Plan No.

101615666

Plan No.

Saskatchewan

Street

Rim Elev. 508.68
 Inv. Elev. 504.26

Rim Elev. 508.80
 Inv. Elev. 504.33

Tri-City Surveys Ltd.

1 - 3111 MILLAR AVENUE TEL: 934-1818
 SASKATOON, SASK. FAX: 242-9404
 S7K 6N3 S04124DEV03.DWG